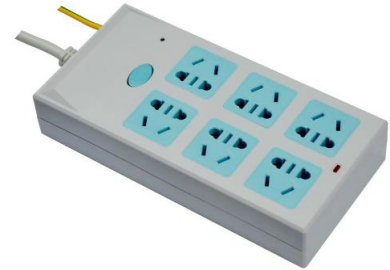


**Surge Protection Power Strip**  
**Model Number: SP-CZ220AC10-C1**

**Product Description:**

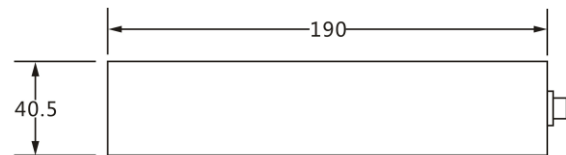
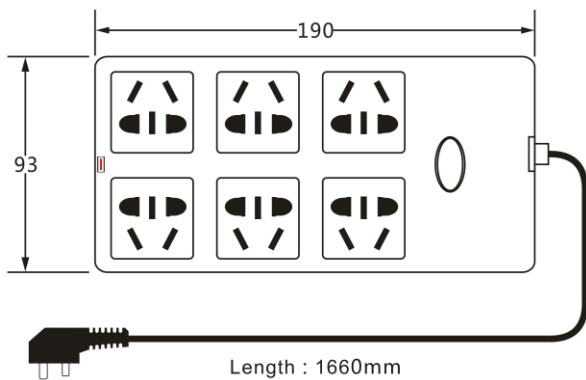
**SP-CZ220AC10-C1** is mainly applied to lightning and over-voltage protection of electrical and electronic equipment of low-voltage AC (220V) system such as computers, communications equipment, fax machines, high-end stereo, video equipment, precision instruments, etc.



**Technical Parameter:**

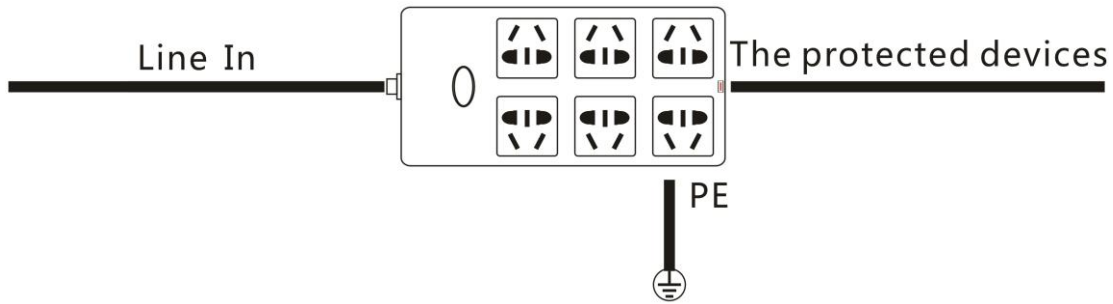
<b>Working Voltage Un (V)</b>	220
<b>Limiting Voltage Up (V)</b>	385
<b>Normal Discharge Current In (kA)</b>	5
<b>Maximum Discharge Current Imax (kA)</b>	10
<b>Response Time (ns)</b>	<25
<b>Leakage Current (μA)</b>	≤20
<b>Protection Level Up (V)</b>	700
<b>Rated Power (kW)</b>	3.5
<b>Weight (g)</b>	430
<b>Working Temperature</b>	-40℃ ~ +80℃
<b>Working Humidity</b>	<95% Non-condensation

**Dimension:**



Unit : mm

**Installation Diagram:**



**Installation Instructions:**

	No	Step
	1	External power supply of surge protection power strip (1)
	2	Power socket of the protected device (2)
	3	Intelligent power switch (3)
	4	Connect ground lead (4) to the grounding device

**Use Tips:**

1. This product is connected in series and should be installed in dry and dustproof environment.
2. Please put the power adapter into the surge protection power strip. Please pay attention that different plugs with different specifications cannot be used in general.
3. The switch button of surge protection power strip can show the power situation.
4. PE lines of surge protector must be reliable connection with the ground lead of lightning protection system. Ground lead should be shortness, thickness and straightness ( $4\text{ mm}^2 < \text{our recommendation} < 50\text{ mm}^2$ ).
5. During the period of use, surge protector should be inspected regularly. If any failure occurs, it should be repaired or replaced in time to ensure the safety of the protected equipment.
6. If device fails, do not disassemble or repair it by yourself. Please contact us timely.